



**EVERSTEEL™**



This Space for Architect/Engineer Approval

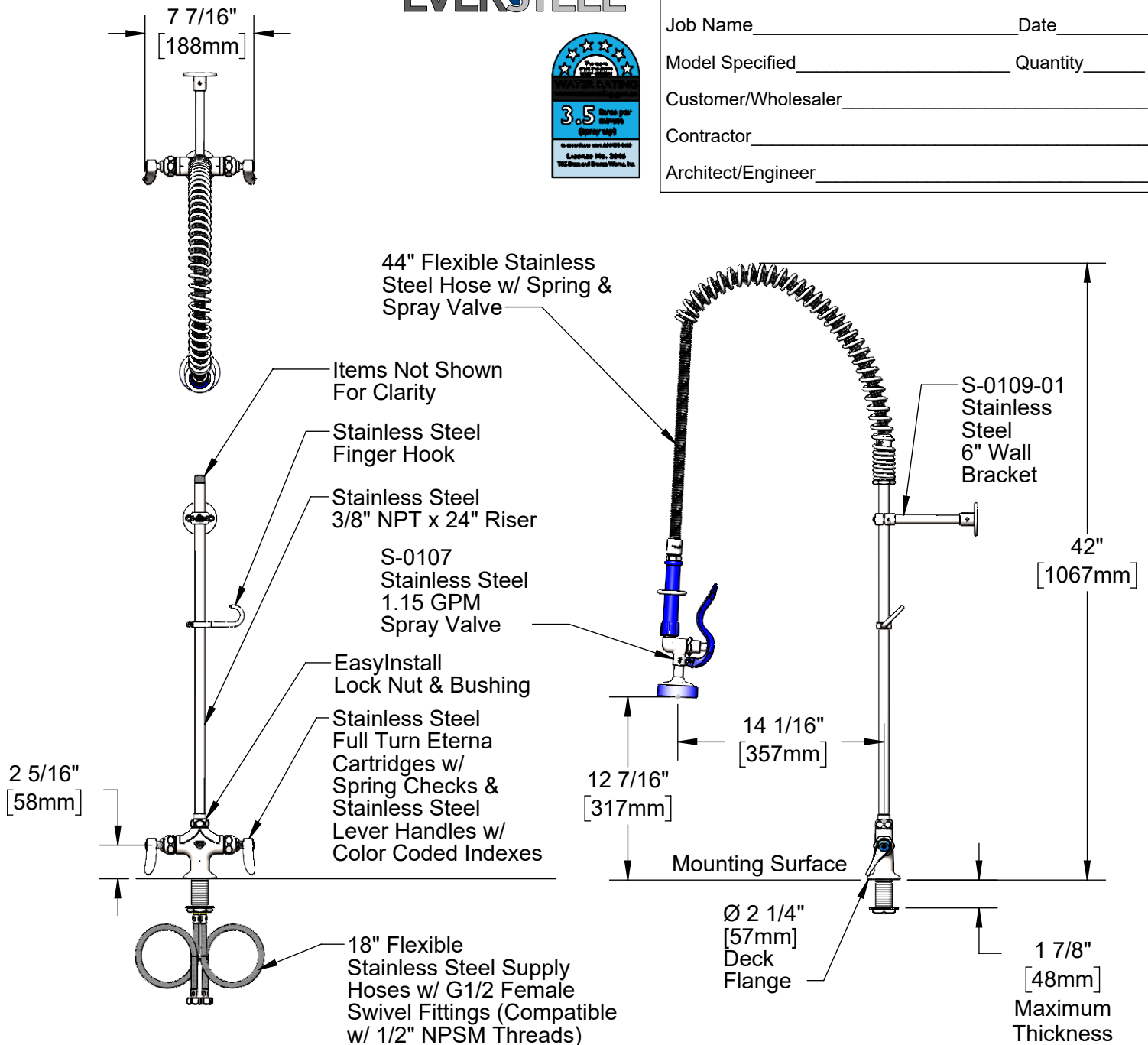
Job Name \_\_\_\_\_ Date \_\_\_\_\_

Model Specified \_\_\_\_\_ Quantity \_\_\_\_\_

Customer/Wholesaler \_\_\_\_\_

Contractor \_\_\_\_\_

Architect/Engineer \_\_\_\_\_



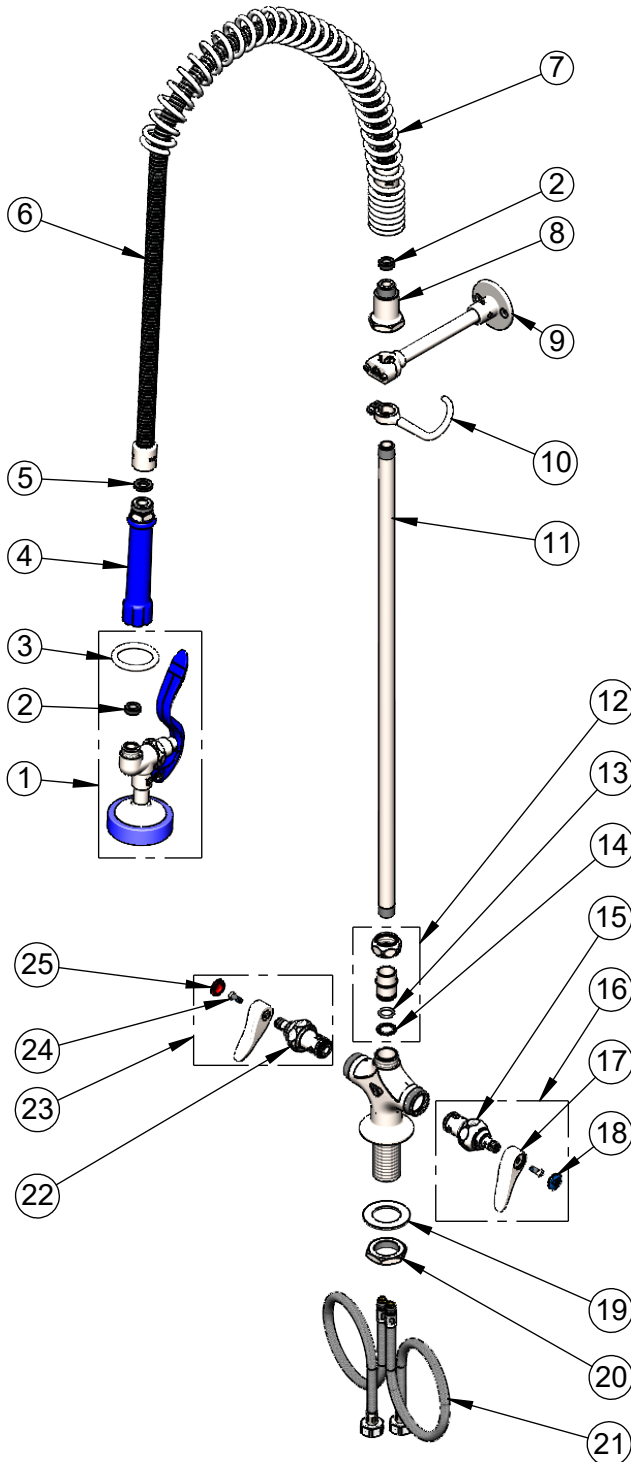
Rough-In Requirement:  
Ø 1 1/2" [38mm] Mounting Hole

**Product Specifications:**

Pre-Rinse Unit: EasyInstall Stainless Steel Single Hole Deck Mount Mixing Faucet, Stainless Steel Full Turn Eterna Cartridges w/ Spring Checks, Stainless Steel Lever Handles, 44" Flexible Stainless Steel Hose, Stainless Steel 1.15 GPM Spray Valve, Stainless Steel 6" Wall Bracket & Flexible Stainless Steel Supply Hoses

**Product Compliance:**

ASME A112.18.1 / CSA B125.1  
NSF 61 - Section 9  
NSF 372 (Low Lead Content)  
AS/NZ WaterMark / WELS



| ITEM NO. | SALES NO.    | DESCRIPTION                                                                                 |
|----------|--------------|---------------------------------------------------------------------------------------------|
| 1        | S-0107       | Stainless Steel 1.15 GPM Spray Valve (Blue)                                                 |
| 2        | 010476-45    | #27 Washer                                                                                  |
| 3        | S000907-30   | SS Spray Valve Hold Down Ring                                                               |
| 4        | S011482-30   | Stainless Steel Grip Handle (Blue)                                                          |
| 5        | 001014-45    | Washer, Hose Barrel                                                                         |
| 6        | S-0044-H2A   | 44" Flexible Stainless Steel Hose, Less Handle                                              |
| 7        | S000888-30   | SS EasyInstall Overhead Spring                                                              |
| 8        | S000821-30   | Stainless Steel Spring Body                                                                 |
| 9        | S-0109-01    | Stainless Steel 6" Wall Bracket                                                             |
| 10       | S004R        | Stainless Steel Finger Hook                                                                 |
| 11       | S000372-30   | Stainless Steel 3/8" NPT x 24" Riser                                                        |
| 12       | SEZ-K        | Stainless Steel EasyInstall Kit: Nut, Bushing, O-Ring & Lock Washer                         |
| 13       |              | O-Ring, Size 2-112                                                                          |
| 14       | 014200-45    | Star Washer, Anti-Rotation                                                                  |
| 15       | S012442-30FT | Stainless Steel Full Turn Eterna Cartridge w/ Spring Check, LTC                             |
| 16       | S002711-30FT | Stainless Steel Full Turn Eterna Cartridge w/ Spring Check, Handle, Blue Index & Screw, LTC |
| 17       | S001638-30NS | Lever Handle (New Style)                                                                    |
| 18       | 018506-19NS  | Blue Button Index, Press-in                                                                 |
| 19       | S007365-20   | Stainless Steel Lock Washer                                                                 |
| 20       | S000965-20   | Stainless Steel Lock Nut                                                                    |
| 21       | 012436-45DR  | Flexible Connector Hose                                                                     |
| 22       | S012443-30FT | Stainless Steel Full Turn Eterna Cartridge w/ Spring Check, RTC                             |
| 23       | S002712-30FT | Stainless Steel Full Turn Eterna Cartridge w/ Spring Check, Handle, Red Index & Screw, RTC  |
| 24       | 000925-45    | Lab Handle Screw                                                                            |
| 25       | 001193-19NS  | Red Button Index, Press-in                                                                  |

**Product Specifications:**

Pre-Rinse Unit: EasyInstall Stainless Steel Single Hole Deck Mount Mixing Faucet, Stainless Steel Full Turn Eterna Cartridges w/ Spring Checks, Stainless Steel Lever Handles, 44" Flexible Stainless Steel Hose, Stainless Steel 1.15 GPM Spray Valve, Stainless Steel 6" Wall Bracket & Flexible Stainless Steel Supply Hoses

**Product Compliance:**

ASME A112.18.1 / CSA B125.1  
NSF 61 - Section 9  
NSF 372 (Low Lead Content)  
AS/NZ WaterMark / WELS